

TELANGANA STATE PUBLIC SERVICE COMMISSION

Exam Name Name: TSPSC-CBRT-Town Planning & Building Overseers 6th Dec 2015 Actual
Exam Code : TPBO1615
Notification No: 16/2015
Subject Name: INTERMEDIATE VOCATIONAL STANDARD
Cut Off: 0
Duration: 150
Number of Questions: 150
Total Marks: 150.0

INTERMEDIATE VOCATIONAL STANDARD

Group Number :	1
Group Id :	31
Group Maximum Duration :	0
Group Minimum Duration :	150
Revisit allowed for view? :	No
Revisit allowed for edit? :	No
Break time:	0
Group Marks:	150.0

Question Number : 1 Question Id : 4501 Question Type : MCQ

Correct : 1.0 Wrong : 0.0

Continuous thick lines are drawn for

Options :

1. Visible edges
2. Dimension lines
3. Hidden edges
4. Centre lines

Question Number : 2 Question Id : 4502 Question Type : MCQ

Correct : 1.0 Wrong : 0.0

Projection lines are drawn as

Options :

2. Continuous thin
3. Dashed thick
4. Dashed thin

Question Number : 3 Question Id : 4503 Question Type : MCQ

Correct : 1.0 Wrong : 0.0

Drawing practice must follow certain rules if it has to serve as a means of communication

Options :

1. ANSI
2. BSB
3. DIN
4. BIS

Question Number : 4 Question Id : 4504 Question Type : MCQ

Correct : 1.0 Wrong : 0.0

The lines of the inclined lettering are drawn at an angle of _____ from the vertical

Options :

1. 25 degrees to the right
2. 25 degrees to the left
3. 15 degrees to the right
4. 15 degrees to the left

Question Number : 5 Question Id : 4505 Question Type : MCQ

Correct : 1.0 Wrong : 0.0

The recommended sizes (h) of letters & numerals in mm. for sub-titles and headings shall be

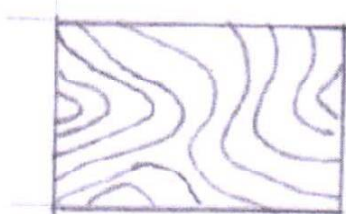
Options :

1. 15
2. 12
3. 10
4. 6

Question Number : 6 Question Id : 4506 Question Type : MCQ

Correct : 1.0 Wrong : 0.0

The conventional representation of material is



Options :

1. Glass
2. Wood
3. Concrete
4. Metal

Question Number : 7 Question Id : 4507 Question Type : MCQ

Correct : 1.0 Wrong : 0.0

In sectional views, when the cutting plane passes through the entire object, the sectional view obtained is called

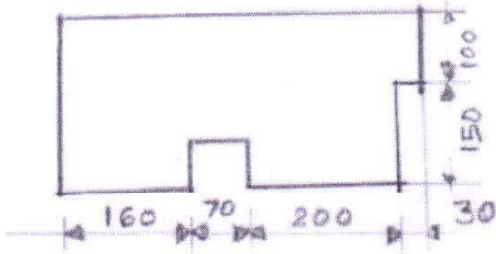
Options :

1. Local section
2. Half section
3. Full section
4. Partial section

Question Number : 8 Question Id : 4508 Question Type : MCQ

Correct : 1.0 Wrong : 0.0

The arrangement of dimensions on the drawing is



Options :

1. Parallel dimensions
2. Chain dimensions
3. Combined dimensions
4. Co-ordinate dimensions

Question Number : 9 Question Id : 4509 Question Type : MCQ

Correct : 1.0 Wrong : 0.0

Two circles of different diameters are separated by a certain distance. They may be connected by

Options :

1. Internal arc
2. External arc
3. Either internal or external arc
4. Curved arc

Question Number : 10 Question Id : 4510 Question Type : MCQ

Correct : 1.0 Wrong : 0.0

Two sides of a right angled triangle are 6 and 8 units. The length of the third side is

Options :

1. 10 units
2. 8 units
3. 6 units
4. 4 units

Question Number : 11 Question Id : 4511 Question Type : MCQ

Correct : 1.0 Wrong : 0.0

The interior angle of a regular hexagon is

Options :

1. 60 degrees
2. 90 degrees

3. 105 degrees
4. 120 degrees

Question Number : 12 Question Id : 4512 Question Type : MCQ

Correct : 1.0 Wrong : 0.0

Diagonals intersect at 90 degrees in a

Options :

1. Parallelogram
2. Rectangle
3. Rhombus
4. Trapezium

Question Number : 13 Question Id : 4513 Question Type : MCQ

Correct : 1.0 Wrong : 0.0

In a reducing scale, the representative fraction is

Options :

1. >1
2. <1
3. 1
4. 0

Question Number : 14 Question Id : 4514 Question Type : MCQ

Correct : 1.0 Wrong : 0.0

If 2cms length of the drawing represents 5 metres of the original size, the R.F is equal to

Options :

1. 1:500
2. 1:250
3. 1:100
4. 1:50

Question Number : 15 Question Id : 4515 Question Type : MCQ

Correct : 1.0 Wrong : 0.0

When measurements are desired in three units, _____ scale is used

Options :

1. Diagonal scale
2. Plain scale
3. Isometric scale
4. Scale of chords

Question Number : 16 Question Id : 4516 Question Type : MCQ

Correct : 1.0 Wrong : 0.0

The length of the scale is _____ cms, if R.F = $1/60$ and to measure upto 6m

Options :

1. 5
2. 10
3. 15
4. 20

Question Number : 17 Question Id : 4517 Question Type : MCQ

Correct : 1.0 Wrong : 0.0

The type of scale used to measure or set angles is

Options :

1. Scale of chords
2. Vernier scale
3. Comparative scale
4. Diagonal scale

Question Number : 18 Question Id : 4518 Question Type : MCQ

Correct : 1.0 Wrong : 0.0

A heptagon has _____ no of sides

Options :

1. 4
2. 5
3. 6
4. 7

Question Number : 19 Question Id : 4519 Question Type : MCQ

Correct : 1.0 Wrong : 0.0

Which of the following is a solid of revolution

Options :

1. Cube
2. Cuboid
3. Cylinder
4. Pyramid

Question Number : 20 Question Id : 4520 Question Type : MCQ

Correct : 1.0 Wrong : 0.0

Which solid represents circular form both in plan and in elevation

Options :

1. Cylinder
2. Cone
3. Sphere
4. Prism

Question Number : 21 Question Id : 4521 Question Type : MCQ

Correct : 1.0 Wrong : 0.0

The top view of a cube is

Options :

1. Square
2. Rectangle
3. Circle
4. Hexagon

Question Number : 22 Question Id : 4522 Question Type : MCQ

Correct : 1.0 Wrong : 0.0

State the quadrant in which the point is located, if the front view is above xy and top view is below xy

Options :

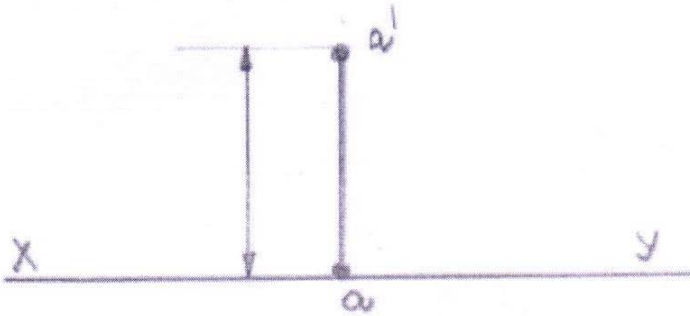
1. 60 degrees
2. 90 degrees

- 3. Third
- 4. Fourth

Question Number : 23 Question Id : 4523 Question Type : MCQ

Correct : 1.0 Wrong : 0.0

Indicate the position of the point A given in the fig. with respect to the planes of projection



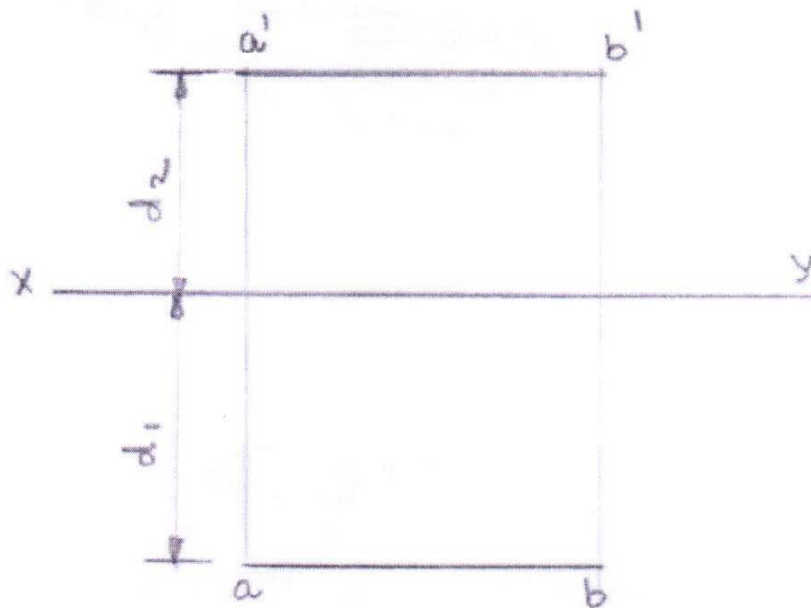
Options :

- 1. Vertical plane
- 2. Horizontal plane
- 3. First quadrant
- 4. Third quadrant

Question Number : 24 Question Id : 4524 Question Type : MCQ

Correct : 1.0 Wrong : 0.0

The possible position of line AB with respect to the planes of projection is



Options :

- 1. Inclined to one plane
- 2. Inclined to both the planes
- 3. Parallel to both the planes
- 4. Parallel to one plane

Question Number : 25 Question Id : 4525 Question Type : MCQ

Correct : 1.0 Wrong : 0.0

Solids have _____ number of dimensions

Options :

1. One
2. Two
3. Three
4. Four

Question Number : 26 Question Id : 4526 Question Type : MCQ

Correct : 1.0 Wrong : 0.0

Plane figures in space are not represented by

Options :

1. Three points not on straight line
2. Three points on a straight line
3. A point and a line
4. Two parallel lines

Question Number : 27 Question Id : 4527 Question Type : MCQ

Correct : 1.0 Wrong : 0.0

Name the solid if the base plan is a circle and the elevation is a triangle

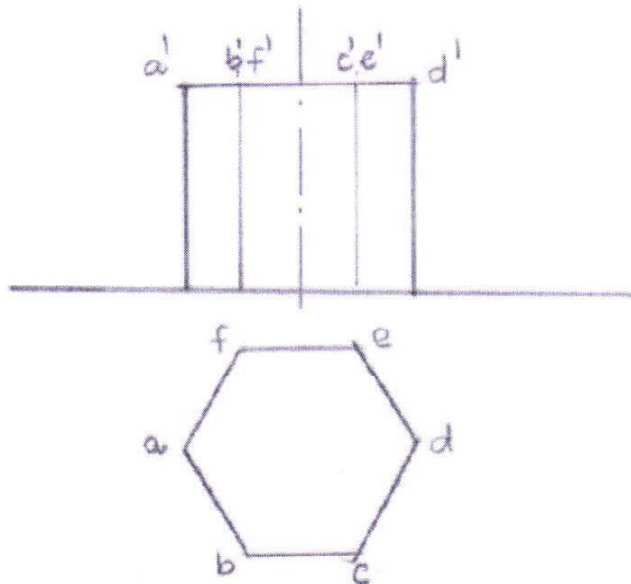
Options :

1. Pyramid
2. Prism
3. Cylinder
4. Cone

Question Number : 28 Question Id : 4528 Question Type : MCQ

Correct : 1.0 Wrong : 0.0

View the projections and identify the object



Options :

1. Hexagonal prism
2. Hexagonal pyramid
3. Rectangular prism

4. Rectangular pyramid

Question Number : 29 Question Id : 4529 Question Type : MCQ

Correct : 1.0 Wrong : 0.0

The size of a modular brick as per BIS is

Options :

1. 230x114x76
2. 190x90x40
3. 190x90x90
4. 180x90x90

Question Number : 30 Question Id : 4530 Question Type : MCQ

Correct : 1.0 Wrong : 0.0

Cutting the brick longitudinally into two equal parts is called

Options :

1. Bevelled closer
2. Mitred closer
3. King closer
4. Queen closer

Question Number : 31 Question Id : 4531 Question Type : MCQ

Correct : 1.0 Wrong : 0.0

Alternate courses of headers and stretchers is known as

Options :

1. Flemish bond
2. English bond
3. Header bond
4. Stretcher bond

Question Number : 32 Question Id : 4532 Question Type : MCQ

Correct : 1.0 Wrong : 0.0

The process of spreading liquid mortar /cement slurry over stone /brick joints is called

Options :

1. Grouting
2. Throating
3. Coping
4. Moulding

Question Number : 33 Question Id : 4533 Question Type : MCQ

Correct : 1.0 Wrong : 0.0

The stone masonry having fine dressed stones is

Options :

1. Random rubble masonry
2. Coursed rubble masonry
3. Ashlar masonry
4. Composite masonry

Question Number : 34 Question Id : 4534 Question Type : MCQ

Correct : 1.0 Wrong : 0.0

Options :

1. Quoin stone
2. Facing stone
3. Backing stone
4. Through stone

Question Number : 35 Question Id : 4535 Question Type : MCQ

Correct : 1.0 Wrong : 0.0

Bearing capacity is maximum in _____ soils

Options :

1. Soft clay
2. Compact sand
3. Loose gravel
4. Hard rock

Question Number : 36 Question Id : 4536 Question Type : MCQ

Correct : 1.0 Wrong : 0.0

The purpose of providing foundation to a building is

Options :

1. Not to give stability to structure
2. To decrease the life of structure
3. To decrease bearing capacity of foundation soil
4. To distribute the load of the structure on a larger area

Question Number : 37 Question Id : 4537 Question Type : MCQ

Correct : 1.0 Wrong : 0.0

Raft foundation is provided in _____

Options :

1. Soft clay soil
2. Sandy soil
3. Compact gravel soil
4. Hard soil

Question Number : 38 Question Id : 4538 Question Type : MCQ

Correct : 1.0 Wrong : 0.0

A common footing provided for two or more columns is known as

Options :

1. Spread foundation
2. Combined footing
3. Raft foundation
4. Pile foundation

Question Number : 39 Question Id : 4539 Question Type : MCQ

Correct : 1.0 Wrong : 0.0

The piles which rest on hard strata are known as

Options :

1. Friction piles
2. Sheet piles
3. Batter piles
4. Bearing piles

Question Number : 40 Question Id : 4540 Question Type : MCQ

Correct : 1.0 Wrong : 0.0

___ is a barrier of impervious material built into a wall or pier to prevent moisture from moving to any part of the building.

Options :

1. Moisture proofing course
2. Damp proofing course
3. Fire proofing course
4. Membrane proofing course

Question Number : 41 Question Id : 4541 Question Type : MCQ

Correct : 1.0 Wrong : 0.0

A roof having a double slope on all sides, with the lower slope much steeper than the upper

Options :

1. Butterfly roof
2. Mansard roof
3. Dutch roof
4. Cross hipped roof

Question Number : 42 Question Id : 4542 Question Type : MCQ

Correct : 1.0 Wrong : 0.0

The slope of terrace slab should be _____ to result in smooth disposal of rainwater

Options :

1. 1 in 60
2. 1 in 40
3. 1 in 20
4. 1 in 10

Question Number : 43 Question Id : 4543 Question Type : MCQ

Correct : 1.0 Wrong : 0.0

Clear distance between the supports of an arch is

Options :

1. Depth
2. Rise
3. Span
4. Breadth

Question Number : 44 Question Id : 4544 Question Type : MCQ

Correct : 1.0 Wrong : 0.0

The wedge shaped units forming the courses of an arch are

Options :

1. Voussoirs
2. Key stones
3. Piers
4. Spendril

Question Number : 45 Question Id : 4545 Question Type : MCQ

Correct : 1.0 Wrong : 0.0

Options :

1. 1
2. 2
3. 3
4. 4

Question Number : 46 Question Id : 4546 Question Type : MCQ

Correct : 1.0 Wrong : 0.0

A lintel is a _____ member

Options :

1. Horizontal
2. Vertical
3. Inclined
4. Curved

Question Number : 47 Question Id : 4547 Question Type : MCQ

Correct : 1.0 Wrong : 0.0

Covering the exposed surface of timber /plywood by means of a sheet of wood is

Options :

1. Studding
2. Moulding
3. Veneering
4. Rebating

Question Number : 48 Question Id : 4548 Question Type : MCQ

Correct : 1.0 Wrong : 0.0

Mortise & tenon joint is a/an

Options :

1. Angle joint
2. Bearing joint
3. Lengthening joint
4. Widening joint

Question Number : 49 Question Id : 4549 Question Type : MCQ

Correct : 1.0 Wrong : 0.0

The contour given to a projecting member is called

Options :

1. Veneering
2. Planing
3. Paneling
4. Moulding

Question Number : 50 Question Id : 4550 Question Type : MCQ

Correct : 1.0 Wrong : 0.0

Top or uppermost horizontal part of a door frame is known as

Options :

1. Rail
2. Style
3. Head
4. Post

Question Number : 51 Question Id : 4551 Question Type : MCQ

Correct : 1.0 Wrong : 0.0

The thickness of a shutter in a framed and panelled door is _____mm.

Options :

1. 30
2. 25
3. 20
4. 15

Question Number : 52 Question Id : 4552 Question Type : MCQ

Correct : 1.0 Wrong : 0.0

Type of wooden joint used to join style and rail of a door is

Options :

1. Lengthening
2. Framing
3. Bearing
4. Oblique -shouldered

Question Number : 53 Question Id : 4553 Question Type : MCQ

Correct : 1.0 Wrong : 0.0

The effluent from septic tanks is usually piped into a soak pit, also known as a _____

Options :

1. Seepage pit
2. Shallow pit
3. Sullage pit
4. Flare pit

Question Number : 54 Question Id : 4554 Question Type : MCQ

Correct : 1.0 Wrong : 0.0

The thickness of plywood used as facing in a flush door is

Options :

1. 12mm.
2. 10mm.
3. 8mm.
4. 4mm.

Question Number : 55 Question Id : 4555 Question Type : MCQ

Correct : 1.0 Wrong : 0.0

For better penetration of lighting through windows, they should be

Options :

1. Taller
2. Shorter
3. Smaller
4. Narrower

Question Number : 56 Question Id : 4556 Question Type : MCQ

Correct : 1.0 Wrong : 0.0

For greater uniformity of internal day light illumination, windows should be located

Options :

2. Two adjacent walls
3. Unilateral
4. Corner windows

Question Number : 57 Question Id : 4557 Question Type : MCQ

Correct : 1.0 Wrong : 0.0

Span of a kingpost roof truss is ____ meters.

Options :

1. > 15
2. 15
3. 12
4. 9

Question Number : 58 Question Id : 4558 Question Type : MCQ

Correct : 1.0 Wrong : 0.0

It is a trap provided in a drainage system with a water seal fixed in a suitable position to collect waste water from the scullery, kitchen sink, wash basins, baths and rain water pipes

Options :

1. Floor trap
2. Gully trap
3. Bottle trap
4. P-trap

Question Number : 59 Question Id : 4559 Question Type : MCQ

Correct : 1.0 Wrong : 0.0

Ratio of rise to span in a king post truss is

Options :

1. 1:2
2. 1:2.5
3. 1:3
4. 1:4

Question Number : 60 Question Id : 4560 Question Type : MCQ

Correct : 1.0 Wrong : 0.0

The bearing on the either side of an opening of 1 m RCC lintel is

Options :

1. 10 cms
2. 12 cms
3. 15 cms
4. 18 cms

Question Number : 61 Question Id : 4561 Question Type : MCQ

Correct : 1.0 Wrong : 0.0

Compression member of a roof truss is

Options :

1. Rail
2. Style
3. Head
4. Post

Question Number : 62 Question Id : 4562 Question Type : MCQ

Correct : 1.0 Wrong : 0.0

Minimum number of steps in a flight of a staircase is

Options :

1. 3
2. 4
3. 5
4. 6

Question Number : 63 Question Id : 4563 Question Type : MCQ

Correct : 1.0 Wrong : 0.0

Horizontal upper part of a step which is used to rest the foot is

Options :

1. Rise
2. Landing
3. Tread
4. Nosing

Question Number : 64 Question Id : 4564 Question Type : MCQ

Correct : 1.0 Wrong : 0.0

Change in direction is 180 degree between the two flights of a staircase in

Options :

1. Open well
2. Doglegged
3. Spiral
4. Bi-furcated

Question Number : 65 Question Id : 4565 Question Type : MCQ

Correct : 1.0 Wrong : 0.0

The minimum headroom of a staircase should not be less than ___ meters.

Options :

1. 1
2. 1.5
3. 1.8
4. 2.1

Question Number : 66 Question Id : 4566 Question Type : MCQ

Correct : 1.0 Wrong : 0.0

Most commonly used stair in a residence is

Options :

1. Open well
2. Spiral
3. Doglegged
4. Circular

Question Number : 67 Question Id : 4567 Question Type : MCQ

Correct : 1.0 Wrong : 0.0

A masonry or RCC chamber constructed for inspection, cleaning and maintenance of sewer lines is

Options :

2. Sump
3. Soak pit
4. Septic tank

Question Number : 68 Question Id : 4568 Question Type : MCQ

Correct : 1.0 Wrong : 0.0

Which of the following is not an orthographic projection

Options :

1. Plan
2. Elevation
3. Section
4. Isometric View

Question Number : 69 Question Id : 4569 Question Type : MCQ

Correct : 1.0 Wrong : 0.0

Height of a building in elevation is measured from

Options :

1. Foundation level
2. Ground level
3. Floor level
4. Sill level

Question Number : 70 Question Id : 4570 Question Type : MCQ

Correct : 1.0 Wrong : 0.0

Soiled water disposal is from

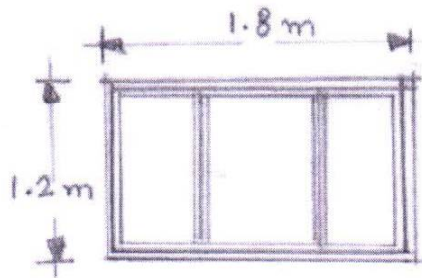
Options :

1. Bath tub
2. Kitchen sink
3. Water closet
4. wash basin

Question Number : 71 Question Id : 4571 Question Type : MCQ

Correct : 1.0 Wrong : 0.0

The elevation given represents



Options :

1. Rail
2. Style
3. Head
4. Post

Question Number : 72 Question Id : 4572 Question Type : MCQ

Correct : 1.0 Wrong : 0.0

_____ piles are those which are driven into the ground until a hard stratum is reached

Options :

1. Friction
2. Sheet
3. Bearing
4. Anchor

Question Number : 73 Question Id : 4573 Question Type : MCQ

Correct : 1.0 Wrong : 0.0

The minimum headroom in a passage under the landing of a staircase and under the staircase shall be _____ m

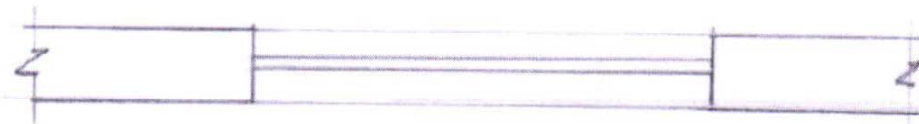
Options :

1. 2.2
2. 2.5
3. 2.7
4. 1.5

Question Number : 74 Question Id : 4574 Question Type : MCQ

Correct : 1.0 Wrong : 0.0

The figure given below represents



Options :

1. Door
2. Window
3. Ventilator
4. Stair

Question Number : 75 Question Id : 4575 Question Type : MCQ

Correct : 1.0 Wrong : 0.0

The plumbing fixture given in the figure is



Options :

1. European W.C
2. Indian W.C
3. Bidet
4. Anglo -Indian W.C

Question Number : 76 Question Id : 4576 Question Type : MCQ

Correct : 1.0 Wrong : 0.0

What is the principle of compass surveying?

Options :

1. Traversing
2. Field plotting
3. Contouring
4. Triangulation

Question Number : 77 Question Id : 4577 Question Type : MCQ

Correct : 1.0 Wrong : 0.0

In Simpson's formula of area calculation, the line joining the top of the ordinates is assumed as

Options :

1. Circular
2. Parabolic
3. Elliptical
4. Straight line

Question Number : 78 Question Id : 4578 Question Type : MCQ

Correct : 1.0 Wrong : 0.0

Earth work volume V , is given by common distance/3 (sum of areas of end sections + 4 times the sum of areas of even sections+ 2 times the sum of areas of odd section) in Formula

Options :

1. Prismoidal
2. Trapezoidal
3. Rectangular

4. Circular

Question Number : 79 Question Id : 4579 Question Type : MCQ

Correct : 1.0 Wrong : 0.0

What is RB in compass surveying?

Options :

1. Reference Boundary
2. Reduced Bearing
3. Reduced Boundary
4. Reference Bearing

Question Number : 80 Question Id : 4580 Question Type : MCQ

Correct : 1.0 Wrong : 0.0

Which prevents the magnetic needle from showing magnetic north

Options :

1. Surveyor attraction
2. Gravitational attraction
3. Local attraction
4. Wooden Tripod

Question Number : 81 Question Id : 4581 Question Type : MCQ

Correct : 1.0 Wrong : 0.0

The horizontal axis in theodolite is also known as

Options :

1. Collimation axis
2. Trunnion axis
3. Bubble level axis
4. Plumb axis

Question Number : 82 Question Id : 4582 Question Type : MCQ

Correct : 1.0 Wrong : 0.0

Latitudes and Departures are used to calculate

Options :

1. area
2. fore bearing
3. back bearing
4. Elevation

Question Number : 83 Question Id : 4583 Question Type : MCQ

Correct : 1.0 Wrong : 0.0

In a rectangular plot of land, ABCD, if the bearing of the line AB is 28° , the bearing of CD is

Options :

1. 188°
2. 208°
3. 168°
4. 152°

Question Number : 84 Question Id : 4584 Question Type : MCQ

Correct : 1.0 Wrong : 0.0

Spirit level is used to

Options :

1. first aid
2. profile levelling
3. levelling the instrument
4. clean the level

Question Number : 85 Question Id : 4585 Question Type : MCQ

Correct : 1.0 Wrong : 0.0

Where is first change point in the following readings on continuous sloping ground? 3.855, 3.285, 1.955, 3.215, 1.700, 0.540, 3.640

Options :

1. after 1.955
2. after 3.215
3. after 3.285
4. after 3.855

Question Number : 86 Question Id : 4586 Question Type : MCQ

Correct : 1.0 Wrong : 0.0

The dimension of the smallest division on the levelling staff is

Options :

1. 0.050 m
2. 0.500 m
3. 0.005 m
4. 0.001 m

Question Number : 87 Question Id : 4587 Question Type : MCQ

Correct : 1.0 Wrong : 0.0

The cross sectional area of an Embankment is given by ..., where b is top width, s is side slope and h is height

Options :

1. $(b+4sh) h$
2. $(b+sh) h$
3. $(2b+sh) h$
4. $(2b+3sh) h$

Question Number : 88 Question Id : 4588 Question Type : MCQ

Correct : 1.0 Wrong : 0.0

The fundamental principle of surveying is to work from the

Options :

1. part to the whole
2. whole to the part
3. centre to the outer
4. part to the section

Question Number : 89 Question Id : 4589 Question Type : MCQ

Correct : 1.0 Wrong : 0.0

Number of links in a 20 m Chain are

Options :

2. 150
3. 100
4. 66

Question Number : 90 Question Id : 4590 Question Type : MCQ

Correct : 1.0 Wrong : 0.0

The line on which frame work of the survey is planned

Options :

1. Check line
2. Plan line
3. Base line
4. Tie line

Question Number : 91 Question Id : 4591 Question Type : MCQ

Correct : 1.0 Wrong : 0.0

In site plan of the building, which set back is usually more?

Options :

1. front
2. left side
3. right side
4. rear

Question Number : 92 Question Id : 4592 Question Type : MCQ

Correct : 1.0 Wrong : 0.0

Two continuous parallel lines symbol indicates the

Options :

1. Foot path
2. Metalled road
3. Unmetalled road
4. Single railway line

Question Number : 93 Question Id : 4593 Question Type : MCQ

Correct : 1.0 Wrong : 0.0

Chain survey is suitable when the given area is

Options :

1. Simple & fairly level
2. Undulating
3. Crowded with features
4. Filled with lot of obstructions

Question Number : 94 Question Id : 4594 Question Type : MCQ

Correct : 1.0 Wrong : 0.0

Well conditioned triangle contains angles between (in degrees)

Options :

1. 30 and 120
2. 20 and 140
3. 15 and 150
4. 18 and 144

Question Number : 95 Question Id : 4595 Question Type : MCQ

Correct : 1.0 Wrong : 0.0

The chain man who 'drags' the chain in chain surveying is known as

Options :

1. Follower
2. Captain
3. Ranger
4. Leader

Question Number : 96 Question Id : 4596 Question Type : MCQ

Correct : 1.0 Wrong : 0.0

In setting out right angle on chain, which of the following set of dimensions are usually taken

Options :

1. 5-12-13m
2. 6-8-10 m
3. 3-4-5 m
4. 2-3-4 m

Question Number : 97 Question Id : 4597 Question Type : MCQ

Correct : 1.0 Wrong : 0.0

The main survey stations are located on the ground, by

Options :

1. reference sketch
2. index sketch
3. rough sketch
4. main sketch

Question Number : 98 Question Id : 4598 Question Type : MCQ

Correct : 1.0 Wrong : 0.0

The symbol given , indicates



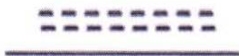
Options :

1. Orchard
2. Hedge
3. Wire fencing
4. Railway line

Question Number : 99 Question Id : 4599 Question Type : MCQ

Correct : 1.0 Wrong : 0.0

The symbol given indicates



Options :

3. Bench mark
4. Base mark

Question Number : 100 Question Id : 4600 Question Type : MCQ

Correct : 1.0 Wrong : 0.0

The symbol given indicates



Options :

1. Bench mark
2. Barren land
3. Cultivated land
4. Boundary Pillar

Question Number : 101 Question Id : 4601 Question Type : MCQ

Correct : 1.0 Wrong : 0.0

Planimeter method of calculation of area is ... method

Options :

1. statistical
2. analytical
3. instrumental
4. ordinate

Question Number : 102 Question Id : 4602 Question Type : MCQ

Correct : 1.0 Wrong : 0.0

In which corner, on the plotted sheet, the title block is drawn?

Options :

1. right top
2. left top
3. right bottom
4. left bottom

Question Number : 103 Question Id : 4603 Question Type : MCQ

Correct : 1.0 Wrong : 0.0

Which of the following is not used to set out a perpendicular on a chain line

Options :

1. French cross staff
2. Optical square
3. Site square
4. Brass Tag

Question Number : 104 Question Id : 4604 Question Type : MCQ

Correct : 1.0 Wrong : 0.0

The limiting length of an offset does not depend upon

Options :

1. The number of features to be surveyed
2. Accuracy of work
3. Maximum error in laying off the direction of offset

4. Scale of plotting

Question Number : 105 Question Id : 4605 Question Type : MCQ

Correct : 1.0 Wrong : 0.0

What is the principle of chain surveying?

Options :

1. Traversing
2. Follower and surveyor
3. Contouring
4. Triangulation

Question Number : 106 Question Id : 4606 Question Type : MCQ

Correct : 1.0 Wrong : 0.0

The levelling from the finishing point of a day to starting point of that day is known as

Options :

1. Check Levelling
2. Profile levelling
3. Fly levelling
4. Differential levelling

Question Number : 107 Question Id : 4607 Question Type : MCQ

Correct : 1.0 Wrong : 0.0

Following colour is used to indicate the symbol of footpath

Options :

1. Prussian blue
2. Black
3. Crimson lake
4. Yellow

Question Number : 108 Question Id : 4608 Question Type : MCQ

Correct : 1.0 Wrong : 0.0

Express the scale 1 cm = 4 m in RF

Options :

1. 1/200
2. 1/300
3. 1/400
4. 1/800

Question Number : 109 Question Id : 4609 Question Type : MCQ

Correct : 1.0 Wrong : 0.0

the diaphragm is fitted in front of

Options :

1. middle of telescope
2. bubble tube
3. object glass
4. eye piece

Question Number : 110 Question Id : 4610 Question Type : MCQ

Correct : 1.0 Wrong : 0.0

Options :

1. N 74° W
2. N 74° E
3. S 74° W
4. S 74° E

Question Number : 111 Question Id : 4611 Question Type : MCQ

Correct : 1.0 Wrong : 0.0

The bench marks established by the Survey of India are known as bench marks.

Options :

1. Permanent
2. GTS
3. Temporary
4. Arbitrary

Question Number : 112 Question Id : 4612 Question Type : MCQ

Correct : 1.0 Wrong : 0.0

Which of the following is not a natural error in levelling?

Options :

1. Earth's curvature
2. Refraction
3. Temperature variation
4. Error due to sluggish bubble

Question Number : 113 Question Id : 4613 Question Type : MCQ

Correct : 1.0 Wrong : 0.0

In the prismatic compass, which end of the graduation ring is marked with zero?

Options :

1. North
2. East
3. South
4. West

Question Number : 114 Question Id : 4614 Question Type : MCQ

Correct : 1.0 Wrong : 0.0

The prismatic compass box is generally made of

Options :

1. Brass
2. Iron
3. Silver
4. Aluminium

Question Number : 115 Question Id : 4615 Question Type : MCQ

Correct : 1.0 Wrong : 0.0

The maximum angular error of closure (in Minutes) in Compass survey, with N number of sides, is

Options :

1. $5\sqrt{N}$

2. $15\sqrt{N}$
3. $25\sqrt{N}$
4. $10\sqrt{N}$

Question Number : 116 Question Id : 4616 Question Type : MCQ

Correct : 1.0 Wrong : 0.0

The dip of the magnetic needle at the equator of the earth, in degrees is

Options :

1. 270
2. 180
3. 90
4. 0

Question Number : 117 Question Id : 4617 Question Type : MCQ

Correct : 1.0 Wrong : 0.0

The fore bearing of a line AB is $N25^{\circ}30'E$, what is its Back bearing?

Options :

1. $N25^{\circ}30'W$
2. $S25^{\circ}30'W$
3. $S25^{\circ}30'E$
4. $N64^{\circ}30'E$

Question Number : 118 Question Id : 4618 Question Type : MCQ

Correct : 1.0 Wrong : 0.0

A plane which is tangential to the level surface at a point is

Options :

1. Horizontal plane
2. Vertical Plane
3. Tangential plane
4. Level plane

Question Number : 119 Question Id : 4619 Question Type : MCQ

Correct : 1.0 Wrong : 0.0

Prism is used to take the reading in 1. Surveyor's compass 2. Prismatic compass 3. Level

Options :

1. 1 only
2. 2 only
3. 1 and 2
4. 1 and 3 only

Question Number : 120 Question Id : 4620 Question Type : MCQ

Correct : 1.0 Wrong : 0.0

Length of the telescopic levelling staff is

Options :

1. 2m

2. 5m
3. 4m
4. 3 m

Question Number : 121 Question Id : 4621 Question Type : MCQ

Correct : 1.0 Wrong : 0.0

Convert the WCB 188° into RB

Options :

1. N 8° W
2. N 8° E
3. S 8° W
4. S 82° E

Question Number : 122 Question Id : 4622 Question Type : MCQ

Correct : 1.0 Wrong : 0.0

The staff reading obtained on a point of known elevation is called as

Options :

1. fore sight reading
2. intermediate sight reading
3. back sight reading
4. backing sight reading

Question Number : 123 Question Id : 4623 Question Type : MCQ

Correct : 1.0 Wrong : 0.0

GTS in surveying means

Options :

1. Great Tangential survey
2. Great Trigonometrical survey
3. Global Trigonometrical survey
4. Global Team survey

Question Number : 124 Question Id : 4624 Question Type : MCQ

Correct : 1.0 Wrong : 0.0

Arithmetical check for Height of Instrument method is given by sum of back sights - sum of fore sights =

Options :

1. Last RL - First RL
2. Last RL + First RL
3. First RL - Last RL
4. $\sum BS$ - bench mark

Question Number : 125 Question Id : 4625 Question Type : MCQ

Correct : 1.0 Wrong : 0.0

The Permissible error in Accurate levelling, if d = Distance in kilometers

Options :

1. $0.012 \sqrt{d}$

2. $0.12 \sqrt{d}$
3. $0.0012 \sqrt{d}$
4. $0.00012 \sqrt{d}$

Question Number : 126 Question Id : 4626 Question Type : MCQ

Correct : 1.0 Wrong : 0.0

Levelling done along the centre of the road at a regular interval is known as

Options :

1. C.S. Levelling
2. Profile levelling
3. Differential levelling
4. Fly levelling

Question Number : 127 Question Id : 4627 Question Type : MCQ

Correct : 1.0 Wrong : 0.0

The imperfect levelling of the instrument comes under

Options :

1. Personal error
2. Instrumental error
3. Natural error
4. Permanent error

Question Number : 128 Question Id : 4628 Question Type : MCQ

Correct : 1.0 Wrong : 0.0

Back sight taken on bench mark of 100.00 m is 2.600 and foresight of a point is 2.500. What is the RL of this point?

Options :

1. 101.10 m
2. 99.10 m
3. 99.90 m
4. 100.10 m

Question Number : 129 Question Id : 4629 Question Type : MCQ

Correct : 1.0 Wrong : 0.0

In plotting of cross section, the usual horizontal and vertical scales are respectively

Options :

1. 1:400, 1:100
2. 1:400, 1:200
3. 1:400, 1:300
4. 1:100, 1:400

Question Number : 130 Question Id : 4630 Question Type : MCQ

Correct : 1.0 Wrong : 0.0

The bench mark provided at the end of the day's work in longitudinal levelling is called Bench mark

Options :

1. GTS
2. Permanent
3. Temporary

4. Daily

Question Number : 131 Question Id : 4631 Question Type : MCQ

Correct : 1.0 Wrong : 0.0

A contour line intersects a ridge line or valley line

Options :

1. Perpendicularly
2. always at 30° to Vertical
3. always at 45°
4. Horizontally

Question Number : 132 Question Id : 4632 Question Type : MCQ

Correct : 1.0 Wrong : 0.0

The vertical distance between adjacent contour lines is

Options :

1. Vertical gradient
2. Contour interval
3. Vertical equivalent
4. Ridge interval

Question Number : 133 Question Id : 4633 Question Type : MCQ

Correct : 1.0 Wrong : 0.0

In a contour map, the higher value contours are towards inside the loop. This indicates

Options :

1. Hill
2. Pond
3. Level ground
4. Valley

Question Number : 134 Question Id : 4634 Question Type : MCQ

Correct : 1.0 Wrong : 0.0

The alignment of highway is usually follows

Options :

1. valley line
2. ridge line
3. across the contour line
4. perpendicular to ridge line

Question Number : 135 Question Id : 4635 Question Type : MCQ

Correct : 1.0 Wrong : 0.0

What survey instrument is used to calculate the capacity of reservoir

Options :

1. Chain
2. Compass
3. Plane table
4. Level

Question Number : 136 Question Id : 4636 Question Type : MCQ

Correct : 1.0 Wrong : 0.0

The method used to calculate the capacity of reservoir

Options :

1. contouring
2. differential levelling
3. Plane table surveying
4. Sectioning

Question Number : 137 Question Id : 4637 Question Type : MCQ

Correct : 1.0 Wrong : 0.0

The contour interval for a any map is kept

Options :

1. zero
2. variable
3. gradually increasing
4. constant

Question Number : 138 Question Id : 4638 Question Type : MCQ

Correct : 1.0 Wrong : 0.0

Contours of different elevations, crossing each other indicates

Options :

1. saddle
2. vertical cliff
3. overhanging cliff
4. sloping cliff

Question Number : 139 Question Id : 4639 Question Type : MCQ

Correct : 1.0 Wrong : 0.0

The surveyor raises his both hands above head and then brings down, his intention is

Options :

1. Assistant to move left
2. Assistant position is correct
3. Assistant to move right
4. Assistant to fix the ranging rod

Question Number : 140 Question Id : 4640 Question Type : MCQ

Correct : 1.0 Wrong : 0.0

When both ends of the survey are not intervisible, the ranging adopted is

Options :

1. Parallel ranging
2. Direct ranging
3. Aerial ranging
4. Indirect ranging

Question Number : 141 Question Id : 4641 Question Type : MCQ

Correct : 1.0 Wrong : 0.0

Length of the commonly used ranging rod is

Options :

1. 2 m
2. 3 m
3. 4 m

4. 1 m

Question Number : 142 Question Id : 4642 Question Type : MCQ

Correct : 1.0 Wrong : 0.0

What are the errors in compass surveying 1. Personal 2. Instrumental 3. Natural

Options :

1. 1 and 2 only
2. 1,2 and 3
3. 2 and 3 only
4. 3 only

Question Number : 143 Question Id : 4643 Question Type : MCQ

Correct : 1.0 Wrong : 0.0

In prismatic compass, which is used to stop the oscillations of the graduated ring?

Options :

1. Lifting pin
2. Prism
3. Brake Pin
4. Glass cover

Question Number : 144 Question Id : 4644 Question Type : MCQ

Correct : 1.0 Wrong : 0.0

Determining the difference in elevation between two points on the surface of the earth, is known as

Options :

1. Differential levelling
2. Simple levelling
3. Block levelling
4. Fly levelling

Question Number : 145 Question Id : 4645 Question Type : MCQ

Correct : 1.0 Wrong : 0.0

Lateral distance of an object or feature measured with reference to a survey line is called as

Options :

1. Latitude
2. Departure
3. Offset
4. Field length

Question Number : 146 Question Id : 4646 Question Type : MCQ

Correct : 1.0 Wrong : 0.0

True North is west of Magnetic North by 4° . This is known as

Options :

1. Declination East
2. Declination West
3. Declination South
4. Declination North

Question Number : 147 Question Id : 4647 Question Type : MCQ

Correct : 1.0 Wrong : 0.0

Options :

1. added
2. doubled
3. subtracted
4. multiplied

Question Number : 148 Question Id : 4648 Question Type : MCQ

Correct : 1.0 Wrong : 0.0

Which of the following lines length and magnetic bearings are measured to check the accuracy of open traverse?

Options :

1. Oblique offsets
2. Cut-off lines
3. Base lines
4. Feature lines

Question Number : 149 Question Id : 4649 Question Type : MCQ

Correct : 1.0 Wrong : 0.0

Which of the following is not a type of variation of magnetic declination

Options :

1. Annual variation
2. Secular variation
3. Diurnal variation
4. Thermal variation

Question Number : 150 Question Id : 4650 Question Type : MCQ

Correct : 1.0 Wrong : 0.0

In a closed traverse of 'n' sides, what is the sum of the measured interior angles, generally used as a check?

Options :

1. $(2n - 2) \times 90^\circ$
2. $(2n - 1) \times 90^\circ$
3. $(2n - 4) \times 90^\circ$
4. $(2n - 3) \times 90^\circ$